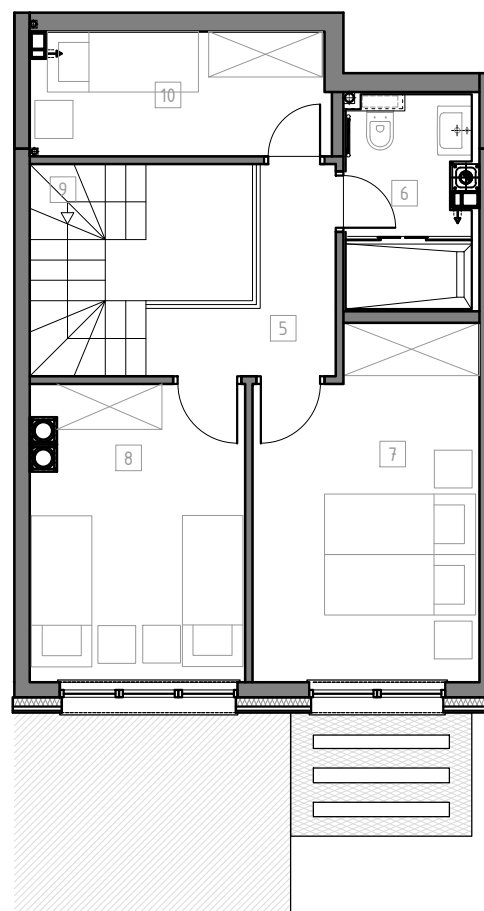
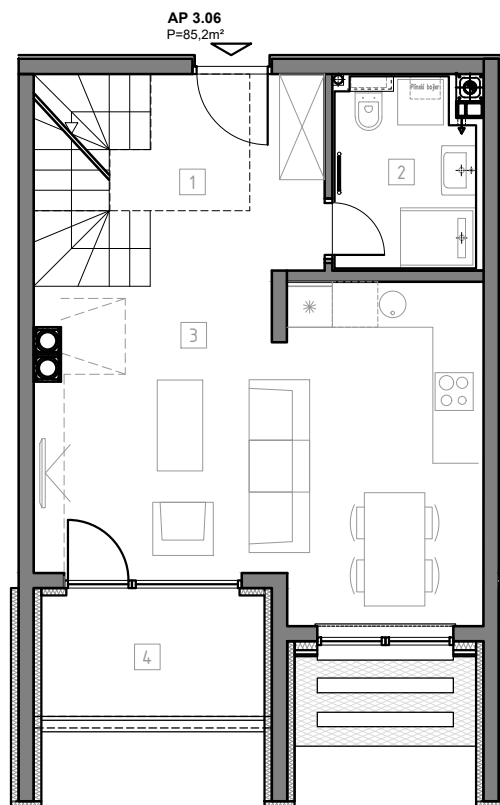


3. SPRAT I GALERIJA

POSLOVNI OBJEKAT - APARTMANI "SAFIR"

APARTMAN 3.06



1	HOL	8.3m ²
2	KUPATILO	4.4m ²
3	DNEVNI BORAVAK, TRPEZARIJA i KUHINJA	24.5m ²
4	LOĐA P=5.2m ² x0,75=	3.8m ²
5	HODNIK GALERIJA	4.7m ²
6	KUPATILO	4.5m ²
7	SOBA 1	13.4m ²
8	SOBA 2	11.2m ²
9	STEPENIŠTE	3.9m ²
10	VIŠENAMJENSKA PROSTORIJA	6.5m ²
UKUPNO		85,2m²

■ PRODANO ■ REZERVISANO

